



# **Executive Summary**

## **Inception report**

**Prevention, Preparedness and Response to  
natural and man-made disasters in Eastern  
Partnership countries – phase 3 (PPRD East 3)**

<b>Report title</b>	<b>Inception report</b> Prevention, Preparedness and Response to natural and man-made disasters in Eastern Neighbourhood Partner Countries – phase 3 (PPRD East 3)
<b>Date</b>	<b>17 February 2021</b>
<b>Prepared by:</b>	<p><b>Programme Management;</b>  Marielle Pettersson, Programme Director (MSB)  Magda Stepanyan, Team Leader (MSB)  Emilio König, Programme Manager (MSB)  Matilda Axelsson, Deputy Programme Manager (MSB)  Johanna Rixer, Communications Officer (MSB)</p> <p><b>Key Experts;</b>  Antonin Petr, Senior Exercise Expert (SKR MV)  Davide Miozzo, Risk Management Capacity Expert (CIMA)  Lorenzo Stefano Massucchielli, Emergency Response Planning Expert (CRI)  Fabrizio Damianian, Civil Society Expert (CRI)  Ville-Veikko Pitkänen - Senior Training and Knowledge Transfer Expert (ESAF)  Carina Brandow, Monitoring and Evaluation Expert (MSB)</p> <p><b>Non-Key Experts;</b>  Laura Hokkanen, Training Coordinator (ESAF)  Marco Massabo, Risk Management Capacity Expert (CIMA)  Eva Trasforini, Disaster Risk Assessment Expert (CIMA)  Mathias Österdahl, Environmental Advisor (MSB)  Jenny Molin, Gender Advisor (MSB)</p>

# Executive summary

## Background

This document provides the Inception report of the PPRD East 3 programme. The 3rd phase of the flagship initiative programme “Prevention, Preparedness and Response to natural and man-made disasters in Eastern Neighbourhood Partner Countries – phase 3 (PPRD East 3)”, was officially launched on 1st October 2020. The Inception report covers the 2021-2024 period and was developed during October 2020 – January 2021.

The PPRD East 3 programme is operational in Armenia, Azerbaijan, Belarus, Georgia, Moldova and Ukraine and builds upon the achievements of the two previous phases. The general objective of PPRD East 3 is to increase the resilience to natural and man-made disasters in the Eastern Neighbourhood Partner Countries and the following three specific objectives will guide the design and implementation of the programme:

- Build sustainable capabilities of Partner Countries' respective civil protection institutions for disaster risk prevention, preparedness and response to natural and man-made disasters.
- Strengthen interlinkages between all relevant governmental actors and civil society stakeholders as well as the scientific community, promoting a national inclusive approach to prevention, preparedness and response to natural and man-made disasters.
- Enhance regional coordination, institutional and operational cooperation between the Union Civil Protection Mechanism (UCPM) and the Eastern Neighbourhood Partner Countries and among Eastern Neighbourhood Partner Countries.

The main stakeholders in the partner countries are civil protection authorities as well as the key ministries and agencies, and various representatives from the scientific community, civil society and the private sector. The programme will also accelerate further the processes initiated at the regional level during the previous phases of the programme with the aim to strengthen coordination and collaboration among the partner countries as well as between EU and the partner countries. The programme will ensure that the cross-cutting issues, i.e. gender, environment and human rights perspectives, are integrated in the programme implementation to enhance its impact, sustainability and relevance.

The programme is implemented by a consortium of highly renowned organisations such as the Swedish Civil Contingencies Agency (MSB), the Emergency Services Academy Finland, the Ministry of Interior of the Slovak Republic – Section of Crisis

Management, the Centro Internazionale in Monitoraggio Ambientale (CIMA) and the Italian Red Cross (CRI).

### **Programme implementation model**

The programme designed in such a way to maximises its impact in each partner country by responding to the national needs and capacities, ensuring full ownership of its processes and its achievements by the national stakeholders. It is firmly based on the findings and recommendations of the PPRD East 2 final evaluation.

The programme is designed in three phases, i.e. inception, implementation, and closure phase. While the engagement of the PPRD East 3 in each partner country will be needs-driven, thematically the programme is designed around the eight tightly linked and mutually reinforcing Work Packages (WP):

#### *Work Package A: Capacity Development*

WP A will support all the other work packages in creating conducive environment for the successful realisations of the programme across all its thematic areas as well as in informing the programme implementation through rigorous assessment exercises planned at the beginning, half-way through, and at the end of the its implementation. The mainstreaming of gender, human rights and environment in programme activities is also part of the capacity development approach under WP A.

#### *Work Package B: Knowledge Transfer*

WP B will contribute to the enhancement of knowledge transfer two-sidedly between the EU and Eastern Neighbourhood Partner Countries and among the Eastern Neighbourhood Partner Countries.

#### *Work Package C: Emergency Preparedness*

WP C will strengthen Emergency Preparedness capabilities in the Eastern Neighbourhood Partner Countries with specific focus on strengthening response planning processes.

#### *Work Package D: Civil Protection Agency Development*

WP D will be exclusively focused on responding to the needs of each civil protection authority in the Eastern Neighbourhood Partner Countries to develop their strategic and operational capabilities. Specifically, the focus is on strengthening (a) 24/7 operational centres in the partner countries; (b) public awareness efforts, and (c) inter-institutional coordination to create synergies with the relevant on-going initiatives in the region and explore joint events, if justified.

*Work Package E: All of society-inclusive Civil Protection Development*

WP E will enrich and broaden the engagement of civil society and academia in disaster prevention, preparedness and response in the Eastern Neighbourhood Partner Countries.

*Work Package F: Regional Cooperation*

WP F will be primarily focused of cooperation and exchange of good practices, as well as mutual support among Eastern Neighbourhood Partner Countries and between and the Member States/Participating States of the Union Civil Protection Mechanism (UCPM).

*Work Package G: Early Warning Systems*

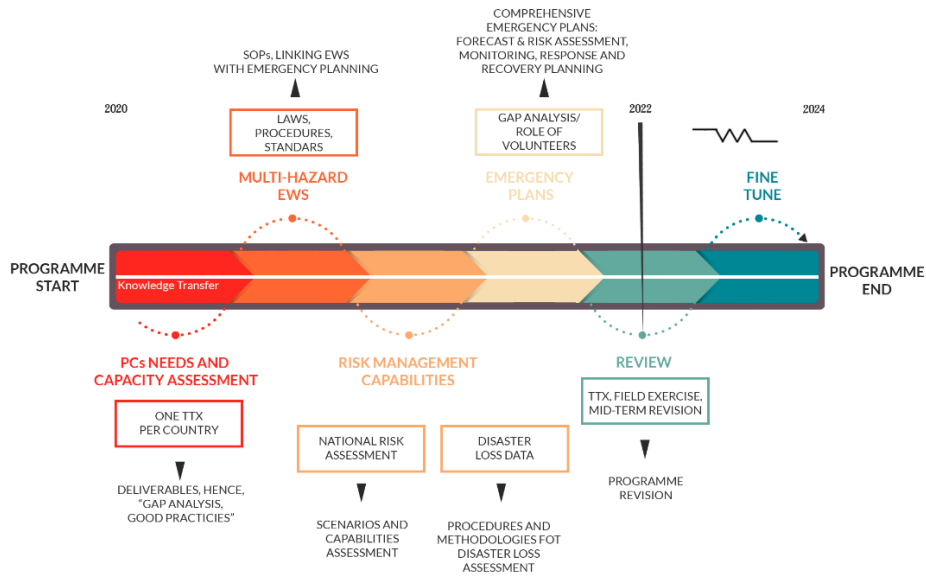
WP G will support National Civil Protection Agencies and stakeholders to strengthen and, where necessary, develop the basis for modern and functional Early Warning Systems (EWS).

*Work Package H: Risk Management Capabilities*

WP H will aim at developing stronger national analytical capabilities for national multi-risk assessments and further strengthening the national capabilities for disaster loss assessment.

Importantly, the work packages are designed to ensure close interlinkages across thematic areas and to promote mutual learning, sharing of experiences and the best practices among the partner countries. The exhibit below provides a visual illustration of the programme's implementation model with the focus to the time horizon till 2022 when the mid-term assessment of the programme results is envisaged. After the mid-term review, the programme implementation model will be updated maintaining the same logic of intervention while revising the type and level of operational engagement across each thematic area. The later will depend on the progress made in each partner country across those thematic areas.

**IMPLEMENTATION MODEL**



**WP A**  
**CAPACITY DEVELOPMENT**  
 - Baseline analysis (TTX)  
 - M&E  
 - Exploitation of project results

**WP C**  
**EMERGENCY PREPAREDNESS**  
 - Transboundary emergency response plans  
 - National and local (municipal) emergency response plans  
 - Civil Protection system preparedness assessment

**WP E**  
**ALL OF SOCIETY CP**  
 - Volunteerism legal framework  
 - Inclusion of volunteers in CP system

**WP G**  
**EARLY WARNING SYSTEM WITH FOCUS ON FF AND FLOODS**  
 - Institutional/legal analysis on EWS support in EWS system buildinf (SOPs, legal codification, normative processes, etc.)  
 - Support of multi stakeholder / interagency coordination mechanisms for EWS (National, Local, Regional)  
 - Interoperability of different data sources  
 - Linking National EWS to EU EWS (EFIS/EFAS)  
 Inclusiveness of EWS elements into local emergency plans

**WP B**  
**KNOWLEDGE TRANSFER**  
 - Linking with EUCP Knowledge Network  
 - TOT  
 - National training  
 - EUCPM training  
 - Exchange of experts

**WP D**  
**CIVIL PROTECTION AGENCY DEVELOPMENT**  
 - Network of national correspondents (24/7) crisis management centres  
 - Awareness raising

**WP F**  
**REGIONAL COOPERATION**  
 - Regional knowledge transfer  
 - TTX  
 - EXE

**WP H**  
**RISK MANAGEMENT CAPACITIES**  
 - NRA (methodology, implementation)  
 - DLD (methodology, implementation)  
 - Using NRA and DLD in emergency planning  
 - Introducing multirisk dimensions with focus on health issues (pandemic)  
 - Risk assessment capability assessment



*Exhibit 1: Programme Implementation Model*

Monitoring and evaluation (M&E) system will be designed around the PPRD East 3 programme to inform the programme implementation with a focus on achieving tangible and sustainable results in each partner country. The M&E system focuses on three criteria: (i) *quality*, i.e. monitoring quality standards of programme activities and its outputs; (ii) *performance*, i.e. monitoring efficiency and effectiveness of the programme towards achievement of its expected outcomes; and (iii) *impact*, i.e. assessing the extend of the direct and indirect, positive and negative effects of the programme. The M&E processes will be further combined with a robust risk management system of the programme to ensure the programme is agile and responds to the existing and emerging risks across the context, institutional, and programmatic domains.

### **Inception Phase of the Programme**

The COVID-19 pandemic has presented a complex challenge the programme addressed in various ways during its inception phase. The programme team has extensively utilized digital solutions for communication and organization of online activities to ensure smooth inception of the programme. Also, the programme team re-conceptualized the activities planned for the inception phase and re-planned parts of the implementation phase. Hence, because of the travel restrictions, the thematic assessment missions were no longer possible during the inception phase. Instead, the next six months after the inception phase will be dedicated to the detailed assessment of the needs and capacities of the civil protection in each partner country. Based on the findings the action plan of the programme, its LFA matrix and the budget will be further fine-tuned accordingly.

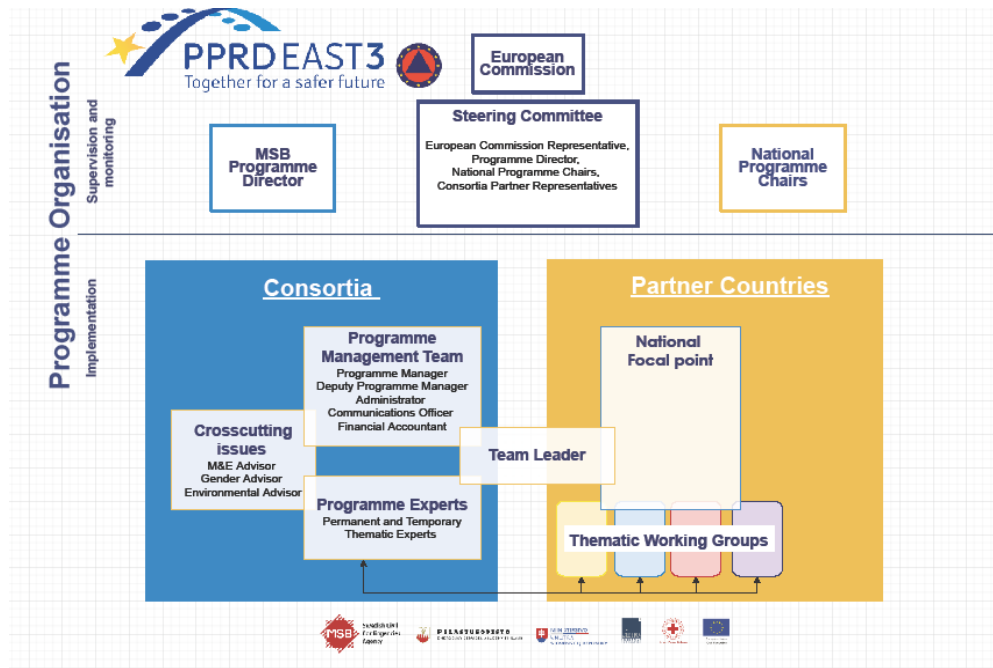
Acknowledging the long-lasting impact the Covid-19 crisis caused across the world and specifically in the Eastern Neighbourhood, the programme team will continue exploring the most optimal solutions to ensure smooth implementation of the programme.

### **Programme governance framework**

The programme governance framework includes several layers of strategic and operational decision-making as illustrated in exhibit 2 below. Hence, the Steering Committee (SC) is the strategic level of decision-making in the programme and includes representatives from each partner country, consortium members, and the EC. The expert team instead, in close coordination with the national working groups, is to shape and implement the programme at the operational level. In addition, the possibility of re-establishing National Advisory Groups in the partner countries will be investigated and if feasible, they will be established in each partner country to provide technical advisory services to the programme implementation at the national level. Efforts will be made to ensure the Working groups and the

National Advisory Groups sustain their functions beyond the programme implementation to continue supporting national civil protection system.

Each partner country has nominated one National Programme Chair to lead the programme at the national level, and National Focal Point to plan, coordinate, and facilitate the programme implementation at the national level.



*Exhibit 2: PPRD East 3 Governance framework*

### **Programme timeline**

The proposed timeline covers the high level activities under each work package across all four years of the programme implementation. However, the first year of the programme and specifically, the time allocated for the assessment exercise is detailed to a higher extent. The proposed timeline should be seen as tentative as it will be updated to reflect the findings from the assessment phase of the programme implementation.

### **Programme visibility and communication**

The visibility of the programme will be ensured according to the EU requirements for the visibility of the EU-funded programmes. During the inception phase a detailed visibility and communication plan is developed to define the programme graphical profile, reflect on the programme positioning on social media, and its website ([www.pprdeast3.eu](http://www.pprdeast3.eu)).



## Programme sustainability and exit strategies

The successful implementation and sustainability of the programme hinges on three pillars: (1) ownership amongst partner countries; (2) building on and developing existing capabilities; and (3) establishing good coordination and working modalities with the partner countries and the respective stakeholders as well as other existing external fora and platforms. The programme's overall sustainability could be seen through the prism of its *technical sustainability* to be achieved through local ownership, knowledge transfer and capacity development, and effective coordination and communication; its *governance sustainability* through strengthened governance mechanisms and the exploration of existing structures both at the national and regional levels; and its *financial sustainability* which, although ultimately is the responsibility of the individual PCs, will remain a point of dialogue aiming to mobilize necessary resources to maintain the programme's results.

The detailed exit strategy will be developed at the closure phase of the programme to ensure smooth exit of the programme from the PCs allowing national counterparts to sustain the programme results and build upon them. The exit strategy will be developed as a highly inclusive process ensuring sufficient engagement of all relevant/on-going initiatives in each PC with dual purpose: (a) to inform their implementation; and (b) to create new prospects for collaboration with the national civil protection system build on recommendations from the exit strategy. The latter will include the following components:

- The full analyses of the **programme achievements vis-à-vis benchmarks** as defined in the programme M&E framework in each PC;
- The **risk assessment** of the programme results for each PC. The focus is to explore the risks towards the sustainability of the programme results through exploring (i) the gaps towards expected outcomes, (ii) the impediments of the uptake of the results, (iii) the opportunities that might in contrary, facilitate the achievement of even stronger results.
- The set of **recommendations** to the PCs on the way forward to sustain and further improve the results achieved based on the lessons learned and risk assessment from each PC.

During the Closure Phase the programme will organize the Final Conference, which will be the final opportunity for identifying country specific and regional achievements and results, as well as to define some early ideas for the way forward for each PC and for the region after the PPRD East programme.